

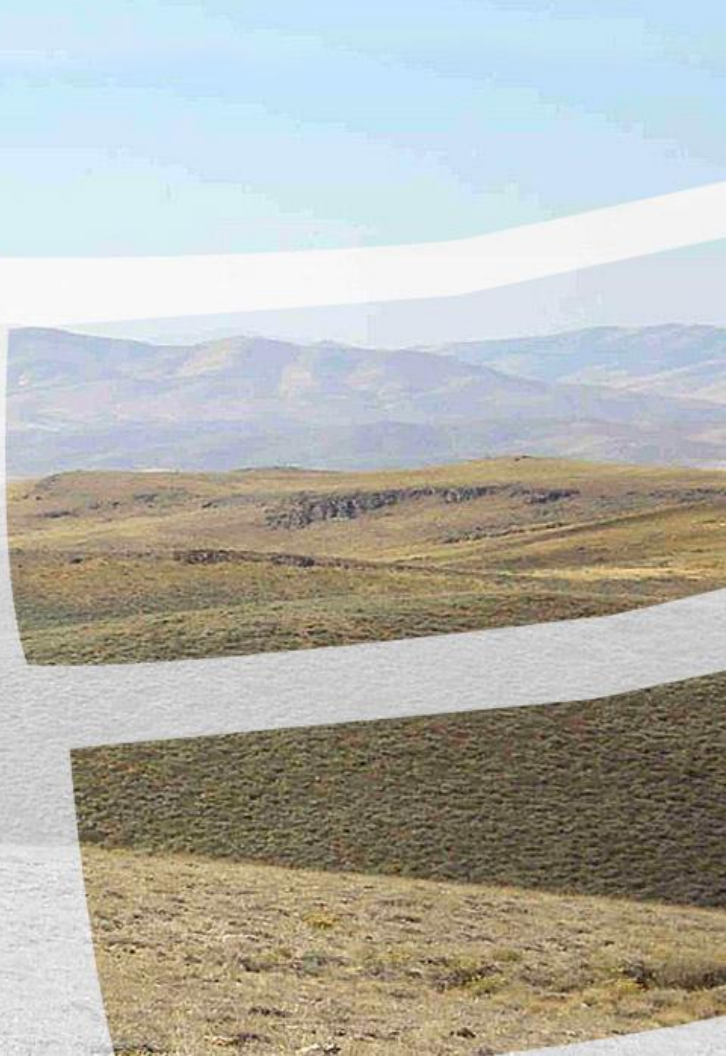


STAKEHOLDER
G O L D

TSX-V: [SRC](#) | OTCQB: [SKHRF](#) | WKN: [A2QEP1](#)

*Evolving High-Value Potential

MAY 2026



Gold and Copper Discovery Potential

WITH CASH FLOW STRATEGY

Disciplined Capital Structure
Trading ~4 X 2026 Cash Flow
Large Discovery Potential, 2026



Discovery and Cash Flow

“We seek to deliver outstanding returns for our shareholders with large-scale discovery of separate **gold** and **copper** deposits on the company’s 100% owned Ballarat Gold-Copper Project located in the heart of the White Gold District of the Yukon Territory, Canada. We are also developing a profitable cash flow business with a view to minimizing share issuance and shareholder dilution.

This strategy is designed to achieve the maximum possible share price re-rating, with successful discovery.”

Christopher Berlet B.A.Sc. (Mining), CFA

CEO & Director

Disciplined Capital Structure

Common Shares **24,791,412**

Warrants \$1.50 | Jun.2026 **900,000**

Warrants \$1.20 | Nov.2027 **2,562,500**

Fully Diluted 28,253,912

Warrant trigger 30 Day VWAP \$1.50 | then 30 days to exercise

Insider Ownership **~ 45%**

Institutional **~ 8%**



About Stakeholder Gold

Profitable Stone Business

- 2021-2025 grew business to 3, high-margin, profitable exotic stone quarries
- 2026 expansion from 3 to 5 operating quarries
- Cash flow from quarries permits maintenance of tight capital structure

Significant Gold and Copper Discovery Potential

- Significant gold and copper discovery potential, diamond drilling begins May.2026
- Company claims surrounded by mining company Majors
- 20 km of Coffee Mine's Northern Access Road being built directly through company claims
- Tight capital structure with significant discovery potential portends meaningful revaluation

2 New Quarries in 2026

Quarry Expansion

2 NEW QUARRIES in 2026 (TOTAL 5)

REVENUE GROWTH

INCREASING PROFIT

MARGIN EXPANSION

Extraction Cost \$300 USD / m³

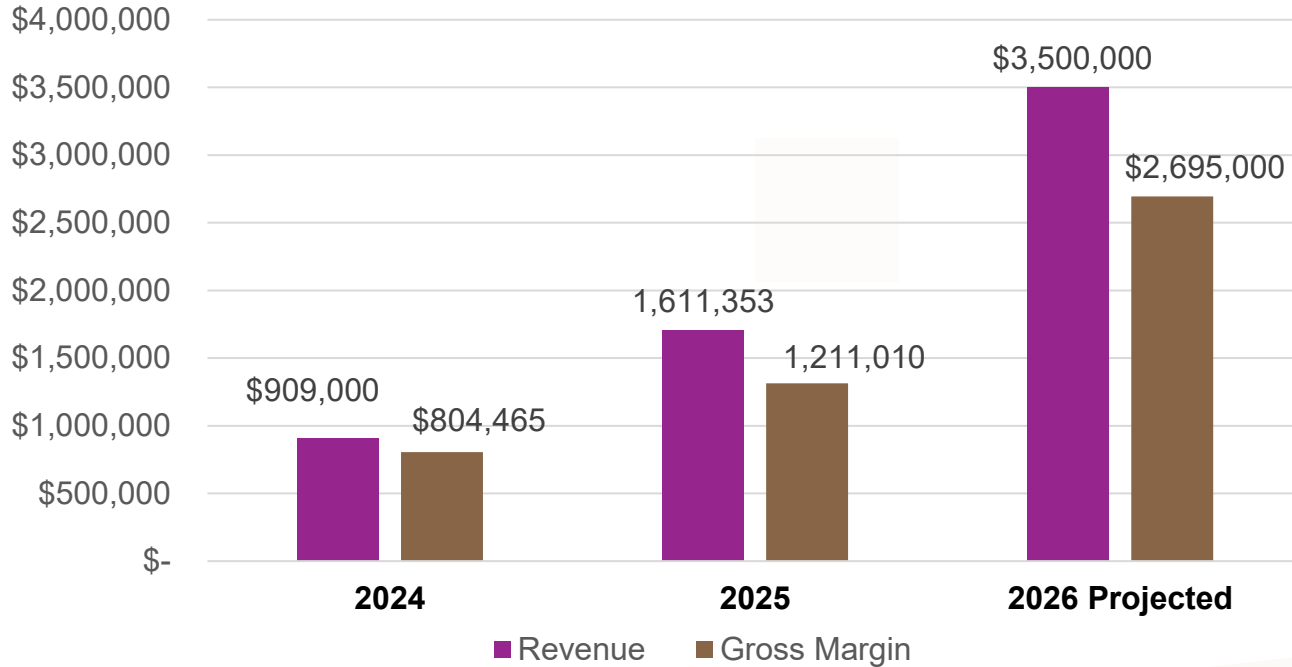
Sale Price (2025) \$1,800 USD / m³

Business Controls Shareholder Dilution

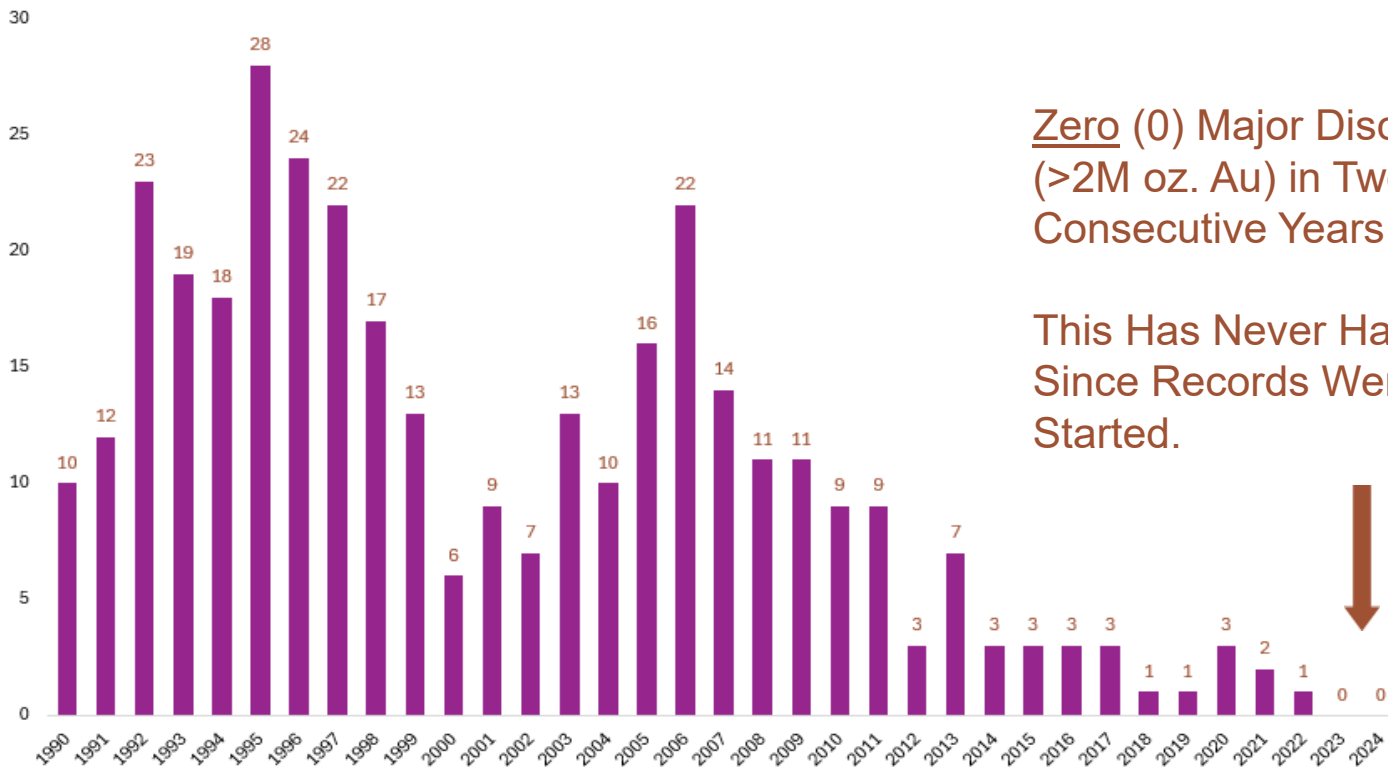


Revenue & Gross Margin 2024 - 2026*

2 NEW QUARRIES IN 2026 – TOTAL 5, TARGET 10



New Gold Discoveries Worldwide



Zero (0) Major Discoveries (>2M oz. Au) in Two (2) Consecutive Years.

This Has Never Happened Since Records Were Started.

Source: S&P Global

White Gold District

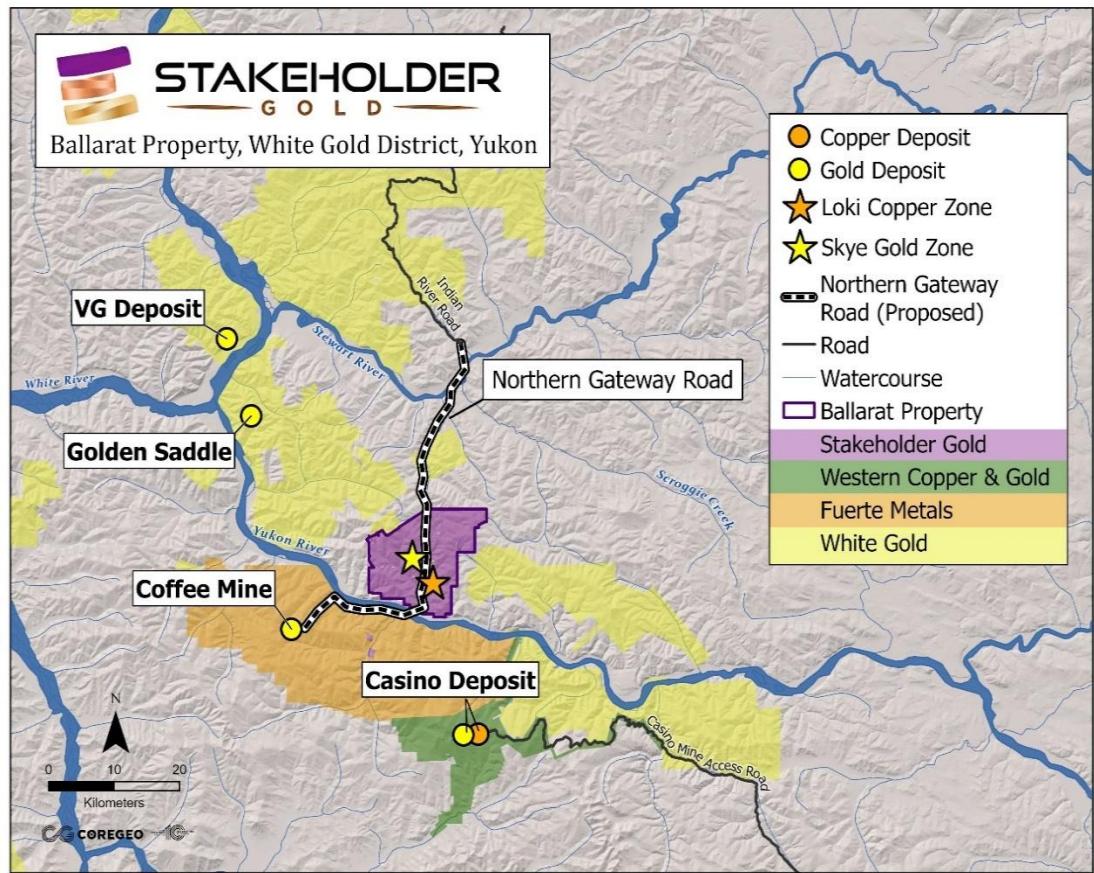


Coffee Gold Mine (Fuerte Mtl.)

- 4.9M oz. Au,
- M.Cap. ~ **\$1,435 M CAD** Apr.2026

Casino Gold-Copper Deposit

- 7.7B lbs. Cu, **17.8M oz. Au**
- M.Cap ~ **\$855 M CAD** Apr..2026



White Gold District

12 - month stock charts to : 26.Apr.2026

White Gold Corp. **TSX-V: WGO**
Market Cap: ~ **\$400 M CAD**



Western Copper and Gold Corp. **TSX: WRN**
Market Cap: ~ **\$855 M CAD**



Fuerte Metals Corp. **TSX-V: FMT**
Market Cap: ~ **\$1,435 M CAD**



Stakeholder Gold Corp. **TSX-V: SRC | OTCQB: SKHRF**
Market Cap: ~ **\$32 M CAD**



Yukon Gold Potential

(White Gold District)

Immediate Vicinity

Fuerte Metals Corp. Coffee Mine (TSX: FMT) (Apr.2026)
~ \$1,435 M CAD

Western Copper & Gold Corp. (TSX: WRN) (Apr.2026)
~ \$855 M CAD

Stakeholder Gold Corp. (TSX-V: SRC) (Apr.2026)
~ \$32 M CAD

White Gold District

Majors all around

2024 (Jan.) **Rio Tinto Canada Inc.** increases investment and pro-rata interest in Western Copper & Gold (TSX: WRN)

2023 (Nov.) **Agnico Eagle Mines Ltd.** maintains 19.9% interest White Gold Corp.

2023 (Mar.) **Mitsubishi Materials Corporation** invests in Western Cop. & Gold ~ \$21.3 M CAD

2025 (Sep) **Fuerte Metals Corp.** acquires Coffee Project

2021 (May) **Rio Tinto Canada Inc.** invests in Western Copper & Gold (TSX: WRN) ~ \$25.6 M CAD

2019 (Oct.) **Newmont Corp.** acquires Dan Man Claims

2016 (May) **Goldcorp Inc.** acquires Kaminak Gold Corp. (~ \$520 M CAD)

Gold and Copper Discovery Potential, 2026

“Stakeholder has sizeable discovery potential for both gold and copper.”

“The Skye Gold Zone is evidenced over 3.2 km in two sub-parallel gold anomalous structures. In the context of regional discoveries this is a considerable strike extent. The East Gold Zone is located 1.5 km to the east of this and may be related geologically, which provides considerable combined scale potential.”

“The Loki Copper Zone is a porphyry copper exploration discovery target located some 8 km to the southeast of the Skye Gold Zone, also fully contained within company claims.”

“Gold (Coffee Deposit) and copper (Casino Deposit) discoveries located nearby have attracted some of the world’s largest mining companies to the immediate vicinity.”

Christopher Berlet B.A.Sc.(Mining), CFA

CEO & Director

Ballarat Gold-Copper Project

Skype Gold Zone

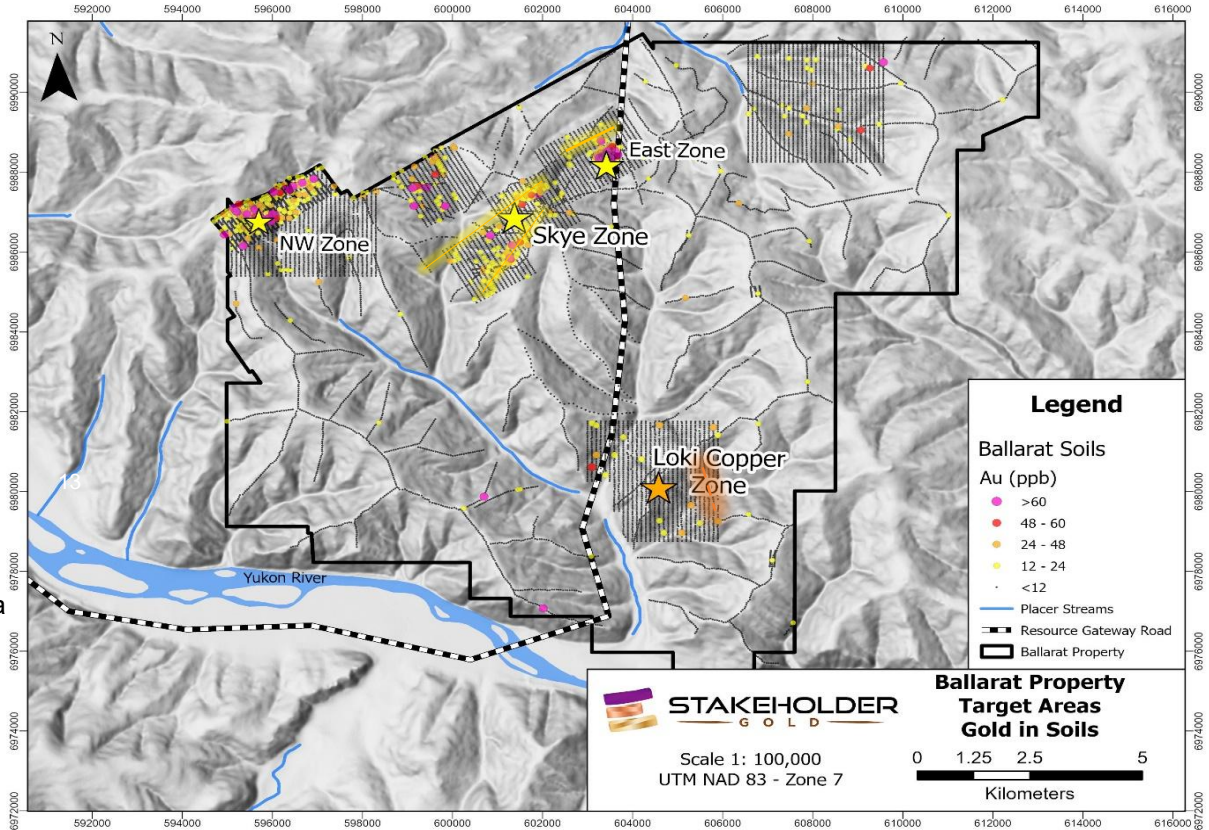
- 3.2 km strike extent
- open to the southwest
- 2 sub-parallel structures

East Gold Zone

- 2 km east of Skype
- possibly related
- scale & size potential

Loki Copper Zone

- Cu porphyry structure
- Large footprint
- 2.5 km X 800 m
- Economic Cu in the area
- West of Minto mine
- North of Casino Deposit



Yukon Gold Potential

Strategic Attributes



10 Claims

Stakeholder holds 10 exploration claims inside **Fuerte Metals** (TSXV: FMT) Coffee Gold Project

21,528+ oz. Au

Barker Creek produced 21,528+ oz. Au (1978-2020) (Gold deposit source Ballarat)

20 km of Road

20 km of Northern Access Road through the middle of SRC claims \$40m of total \$77M spend

18,540+ ha.

Many untested gold and copper anomalies on Ballarat heart of White Gold District

19,924+ oz. Au

Ballarat Creek produced 19,924+ oz. Au (1978-2020) (Gold deposit source Ballarat)

Majors Investing

Several Mining Majors Investing in developing properties around Ballarat

Stakeholder 100% owned Ballarat Gold Project Represents:

Strategic Value / Discovery Potential / Value Proposition

Management

Christopher J. Berlet, B.A.Sc. (Mining), CFA President, CEO & Director
Mining Engineer (Canada) / London School of Economics (UK) / CFA Charterholder (2004)
<https://ca.linkedin.com/in/chrisberlet>

Adam Fage, MSc, P.Geo (Professional Geologist) QP (Qualified Person) Geologist
Independent Geological Consultant
<https://www.linkedin.com/in/adam-fage-a5279a56/>

Marcus Chase, B.A.Sc. (Electrical Engineering), P.Eng. President VMC
25-years business in Brazil, fluent: English, Portuguese, French, Spanish
<https://ca.linkedin.com/in/marcusmchase>

Artie Li, CPA, CA Chief Financial Officer
20-years of audit, accounting & public company reporting experience
www.linkedin.com/in/artie-li-cpa-ca-01b10382/

Robert Finley SVP Corporate Development
Robert was educated in New England and has several years of international business experience.



STAKEHOLDER
G O L D

TSX-V: [SRC](#) | OTCQB: [SKHRF](#) | WKN: [A2QEP1](#)

www.stakeholdergold.com

Contact Us

SUITE 607, 130 QUEENS QUAY EAST
TORONTO, ONTARIO CANADA, M5A 0P6

Phone: 416.525.6869

Email: cberlet@stakeholdergold.com

